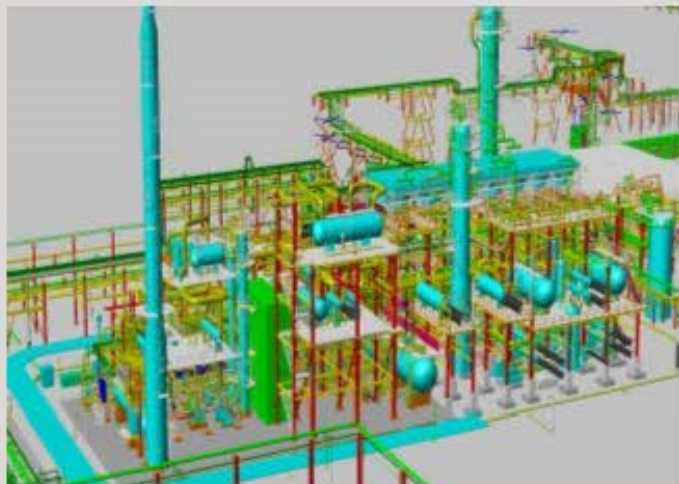


CDU Complex

- ▶ Client: Motor Oil Hellas (MOH), Corinth Refineries S.A., Greece
- ▶ Detailed Engineering Services
- ▶ Production: 60,000 BPSD of crude oil coming from a variety of different feedstocks.
- ▶ March 2008 – July 2010



ATPL main involvement was regarding all revamping works , all process and utilities interconnecting throughout the entire refinery, including all Tie-ins. In detail:

- New Amine Regeneration Unit
- New Cooling Tower cell Unit (Revamping)
- New Instrument Air Drier / Air receiver inside existing unit (Revamping)
- Flare Unit (Revamping)
- Fuel Oil Unit (Revamping)
- Flushing Oil Unit (Revamping)
- New Sulphur Solidification Unit